



**S.I.C.E. Society's**  
**Degree College of Arts, Science & Commerce, Ambarnath (W)**  
**Jambhul Phata, Chikholi, Ambarnath (W)-421505**  
(Affiliated to University Of Mumbai)

---

**4.1.1. Infrastructure for curricular activities**

Sr.NO	Details	Page No
1	Class room Photos	2
2	IT infrastructure	10
3	Details of Infrastructure with carpet area	19
4	Library -Learning Resource	22
5	Examination Section	27
6	Solar panel- and Grid	28



**S.I.C.E. Society's**  
**Degree College of Arts, Science & Commerce, Ambarnath (W)**  
**Jambhul Phata, Chikhloli, Ambarnath (W)-421505**  
(Affiliated to University Of Mumbai)

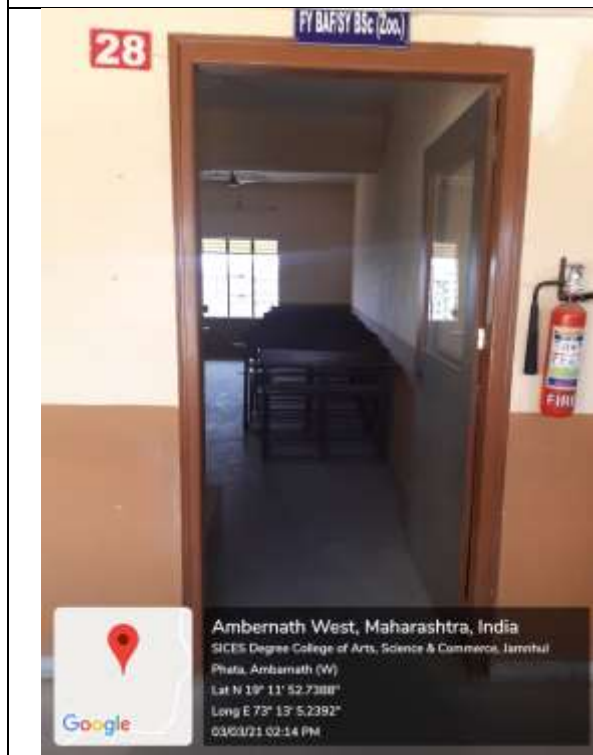
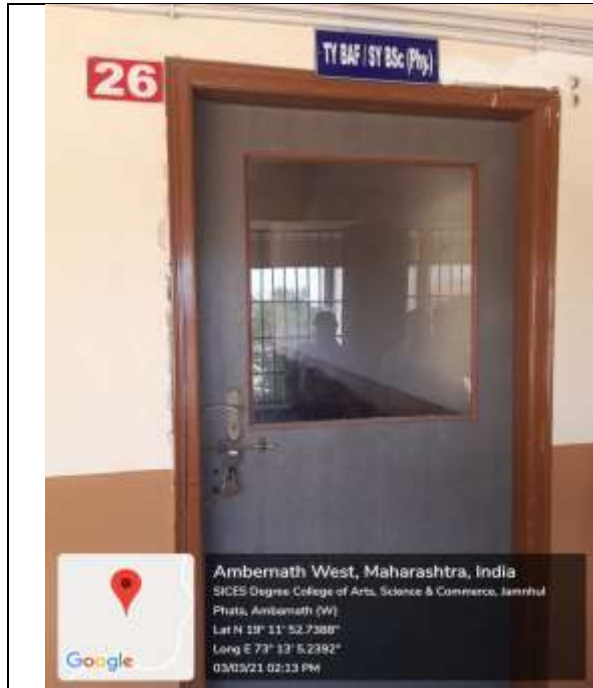
Class room



Class room No. 20, 21, 22, 23



**S.I.C.E. Society's**  
**Degree College of Arts, Science & Commerce, Ambarnath (W)**  
**Jambhul Phata, Chikhloli, Ambarnath (W)-421505**  
(Affiliated to University Of Mumbai)



Class room No. 26, 27, 28, 29



**S.I.C.E. Society's**  
**Degree College of Arts, Science & Commerce, Ambarnath (W)**  
**Jambhul Phata, Chikhloli, Ambarnath (W)-421505**  
(Affiliated to University Of Mumbai)



Class room No. 30, 31, 32, 34



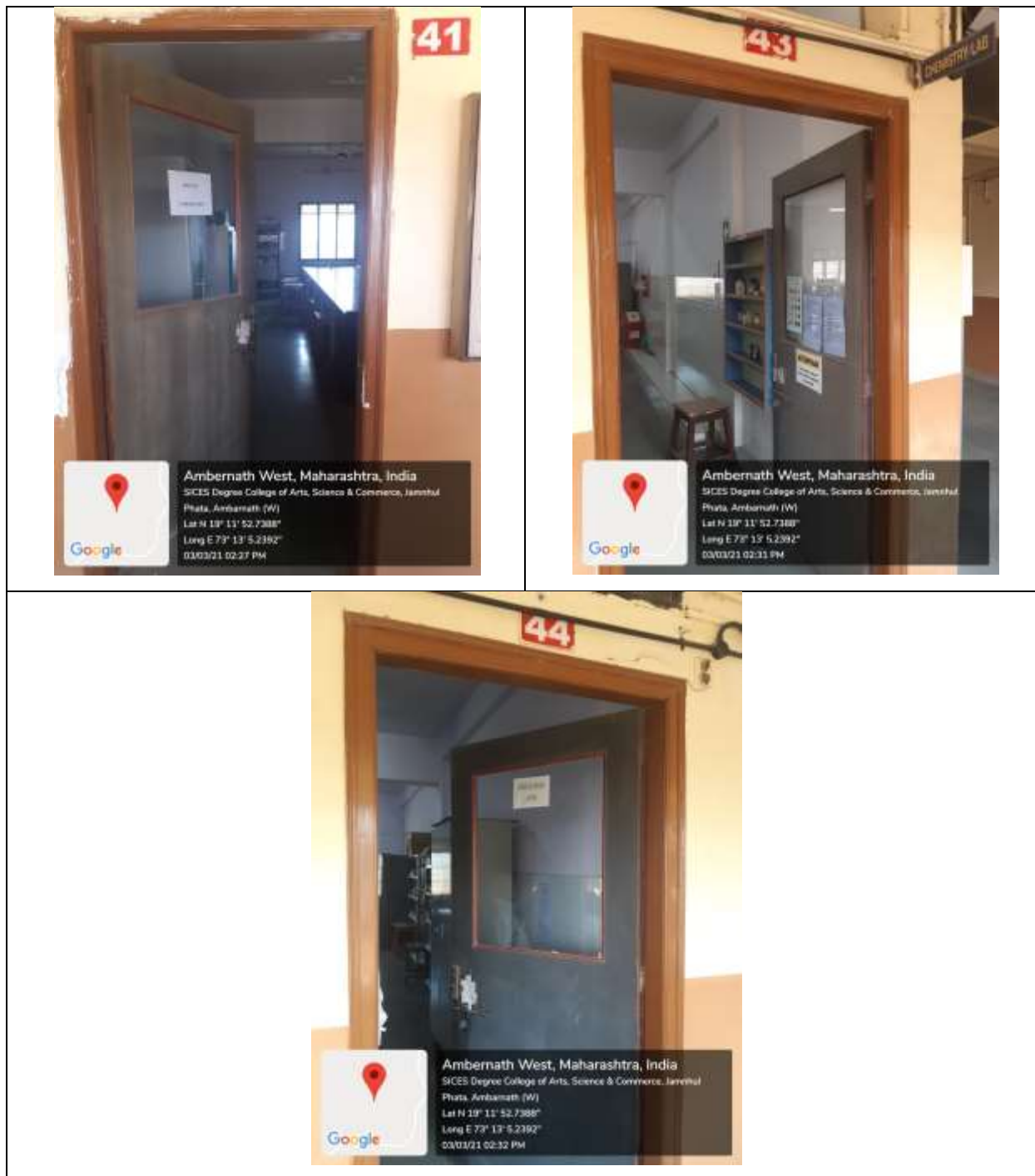
**S.I.C.E. Society's**  
**Degree College of Arts, Science & Commerce, Ambarnath (W)**  
**Jambhul Phata, Chikhloli, Ambarnath (W)-421505**  
(Affiliated to University Of Mumbai)



Class room No. 36, 40  
Microbiology Lab : 38, 39,



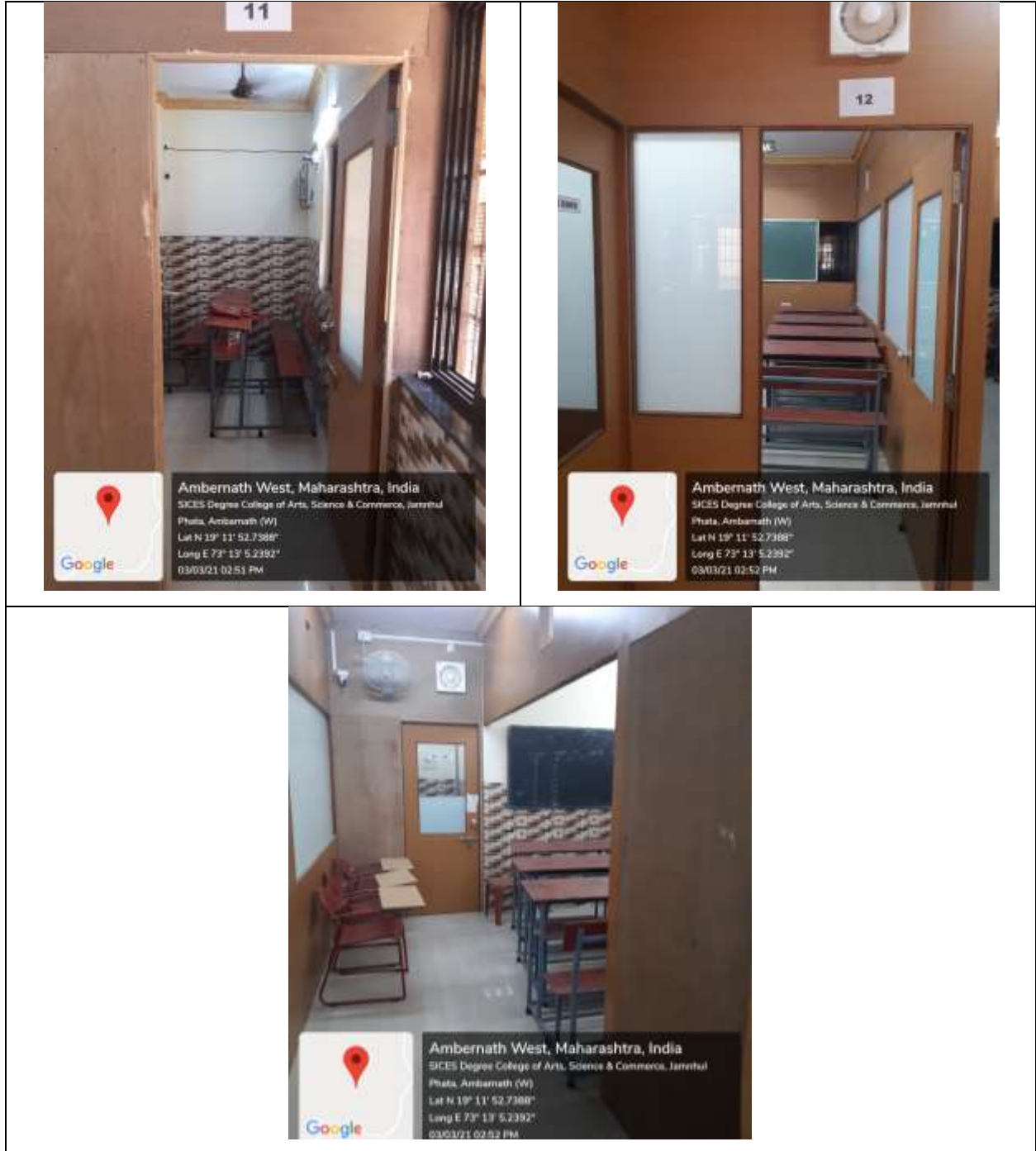
**S.I.C.E. Society's**  
**Degree College of Arts, Science & Commerce, Ambarnath (W)**  
**Jambhul Phata, Chikhloli, Ambarnath (W)-421505**  
(Affiliated to University Of Mumbai)



Labs : ROOM No. 41Botany , 43 Chemistry , 44 Zoology



**S.I.C.E. Society's**  
**Degree College of Arts, Science & Commerce, Ambarnath (W)**  
**Jambhul Phata, Chikhloli, Ambarnath (W)-421505**  
(Affiliated to University Of Mumbai)



Class room No. 11, 12, 12A



**S.I.C.E. Society's**  
**Degree College of Arts, Science & Commerce, Ambarnath (W)**  
**Jambhul Phata, Chikhloli, Ambarnath (W)-421505**  
(Affiliated to University Of Mumbai)

---



Class room 1. Lower ground floor





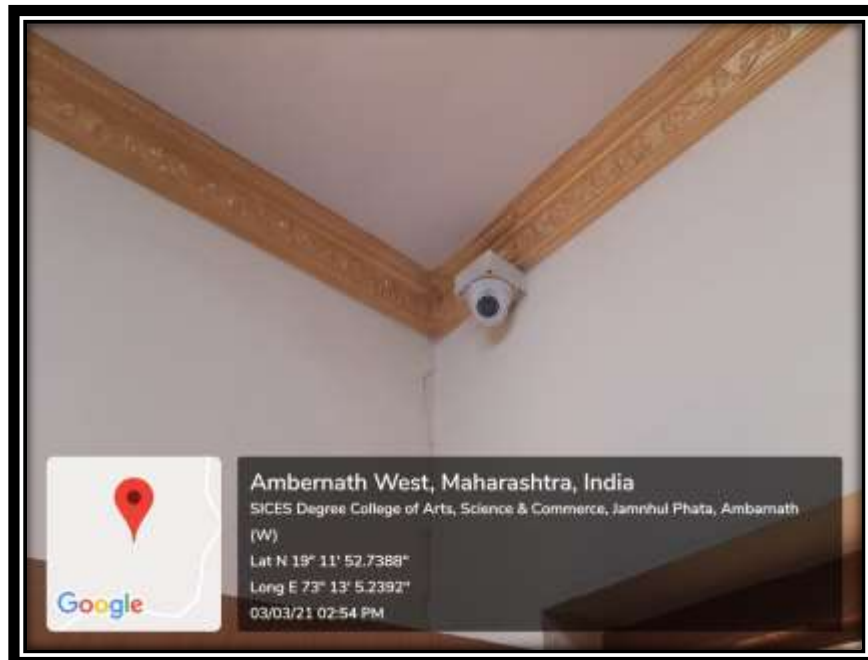
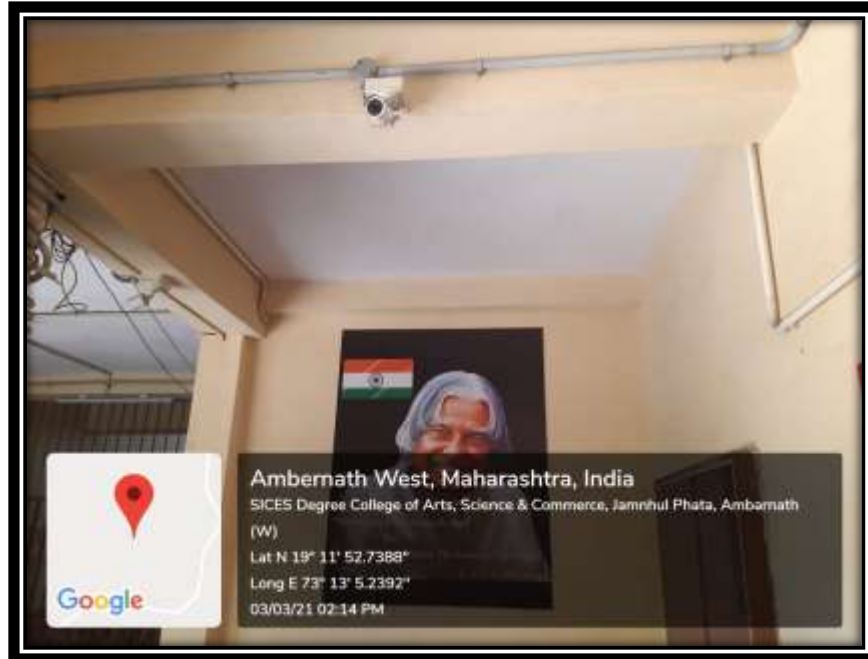
**S.I.C.E. Society's**  
**Degree College of Arts, Science & Commerce, Ambarnath (W)**  
**Jambhul Phata, Chikhloli, Ambarnath (W)-421505**  
(Affiliated to University Of Mumbai)



Class room No. 13 and 16



**S.I.C.E. Society's**  
**Degree College of Arts, Science & Commerce, Ambarnath (W)**  
**Jambhul Phata, Chikhloli, Ambarnath (W)-421505**  
(Affiliated to University Of Mumbai)



CCTV Arrangement



**S.I.C.E. Society's**  
**Degree College of Arts, Science & Commerce, Ambernath (W)**  
**Jambhul Phata, Chikhloli, Ambernath (W)-421505**  
(Affiliated to University Of Mumbai)



Internet Server 2<sup>nd</sup> Floor





**S.I.C.E. Society's**  
**Degree College of Arts, Science & Commerce, Ambarnath (W)**  
**Jambhul Phata, Chikhloli, Ambarnath (W)-421505**  
(Affiliated to University Of Mumbai)

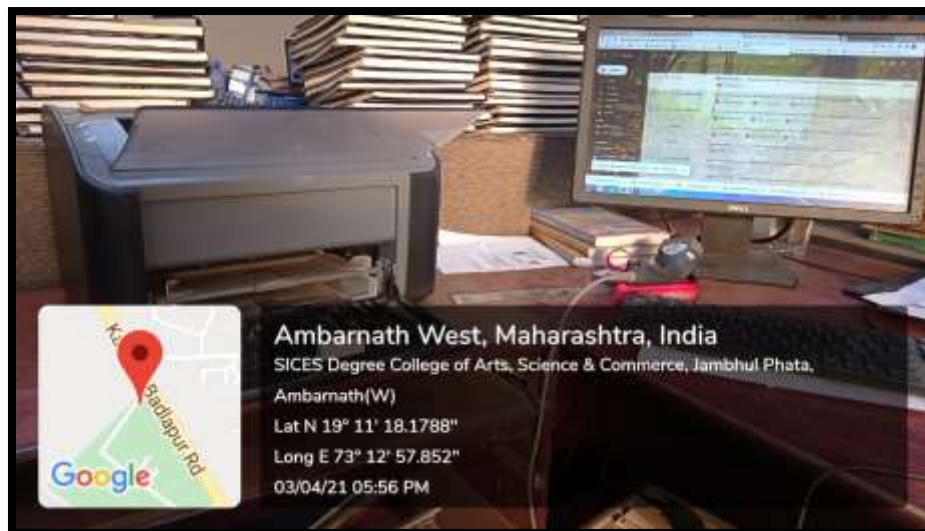
---

Internet Server 3<sup>rd</sup> Floor

Internet Facility



Webcam Facility



Printer



**S.I.C.E. Society's**  
**Degree College of Arts, Science & Commerce, Ambarnath (W)**  
**Jambhul Phata, Chikhloli, Ambarnath (W)-421505**  
(Affiliated to University Of Mumbai)



Xerox Machine at Examination Section and Office



**S.I.C.E. Society's**  
**Degree College of Arts, Science & Commerce, Ambarnath (W)**  
**Jambhul Phata, Chikhloli, Ambarnath (W)-421505**  
(Affiliated to University Of Mumbai)



Biometric Machine



Scanner



Portable Mic system



**S.I.C.E. Society's**  
**Degree College of Arts, Science & Commerce, Ambarnath (W)**  
**Jambhul Phata, Chikhlohi, Ambarnath (W)-421505**  
(Affiliated to University Of Mumbai)

---



Auditorium  
Kyan Utilization



Kyan utilization by students in Zoology lab



Class in CS lab using Kyan



**S.I.C.E. Society's**  
**Degree College of Arts, Science & Commerce, Ambernath (W)**  
**Jambhul Phata, Chikhholi, Ambernath (W)-421505**  
(Affiliated to University Of Mumbai)



IT Lab



CS Lab





**S.I.C.E. Society's**  
**Degree College of Arts, Science & Commerce, Ambarnath (W)**  
**Jambhul Phata, Chikhloli, Ambarnath (W)-421505**  
(Affiliated to University Of Mumbai)



webcam, headband, Tripod stand





**S.I.C.E. Society's**  
**Degree College of Arts, Science & Commerce, Ambernath (W)**  
**Jambhul Phata, Chikhloli, Ambarnath (W)-421505**  
(Affiliated to University Of Mumbai)

---



Generator





**S.I.C.E. Society's**  
**Degree College of Arts, Science & Commerce, Ambarnath (W)**  
**Jambhul Phata, Chikhloli, Ambarnath (W)-421505**  
 (Affiliated to University Of Mumbai)

Details of Infrastructure used for Curricular and Non Curricular activities with carpet area			
Room /Hall No.	Designation	Area in Sq.mts	Purpose for it used
Ground floor			
1	Degree College office	11.65 x 9.00	Reception, Principal Office, Management office, NAAC room, Administration Office
2	Gymkhana	11.65 x 9.00	Gym and indoor games like Table tennis, Carroms & Chess
10	CS & IT lab	11.80 x 5.60	IT lab for IT and BSc computer Sciences
	Canteen	17.20 x 11.10	Refreshment
	NSS room	20.00 x 8.8	For storing NSS materials
11	TY CS/SYCS	20.00 x 10.00	Class room
12	FY CS	16.00 x 10.00	Class room
12A	TYBA	10.8 x 12.00	Class
Lower Ground floor			
	TY IT/SY IT	11.70 x 4.92	Class room



**S.I.C.E. Society's**  
**Degree College of Arts, Science & Commerce, Ambar Nath (W)**  
**Jambhul Phata, Chikhloli, Ambar Nath (W)-421505**  
 (Affiliated to University Of Mumbai)

	Electric panel room	4.35 x 10.15	To place solar panel and electric essentials
First floor			
13	SY BBI	9.10 x3.70	Class room
16	FYBBI	9.20 x 5.35	Class room
Second floor			
20	FYBA	11.65 x4.42	Class room
21	T.Y.BMS	9.15 x4.40	Class room
22	S.YBMS/ F.YB.Sc Zoology	9.15 x5.30	Class room
23	TYBCom/FY Chemistry/Fy FC	9.15 x5.14	Class room
24	Examination Room	10.70 x4.80	To do all activities concerned with examination
25	Staff Room	9.15 x4.58	Staff room with gents and ladies rest room
26	T.Y.BAF / S.Y.Physics	9.30 x 5.14	Class room
27	S.Y.BAF/SY Botany	9.30 x 5.20	Class room
28	FYBAF/SY Zoology	9.30 x 4.30	Class room
29	T.Y.BBI/FY Phy/FY Bot	9.30 x 4.62	Class room
30	F.Y.B.COM	11.80 x 11.74	Class room
31	S.Y.B.COM- A DIVISION/ S.Y.B.Sc Chemistry/ SY BSc FC	9.70 x 7.00	Class room
32	FYBMS/ SY Microbiology	9.70 x 7.00	Class room
33	LIBRARY	11.70 x7.00	



**S.I.C.E. Society's**  
**Degree College of Arts, Science & Commerce, Ambarnath (W)**  
**Jambhul Phata, Chikhloli, Ambarnath (W)-421505**  
(Affiliated to University Of Mumbai)

---

34	FY/SY Maths	11.70 x9.00	Class room
35	Physics Lab.	9.15 x8.8	For FY, SY and TY Physics practicals
35b	TYBSc Phy		Class room
36	T.Y./FY BSc- Microbiology	9.15 x2.5	Class room
37	Girls Common Room	9.20 x3.70	Common for all girls with attached rest room
38	Microbiology Lab- I	9.15 x5.14	
39	Microbiology Lab - II	9.15 x 5.30	
40	T.Y.Bsc.-Chemistry	9.20 x4.40	Class room
41	Botany Lab.	9.15 x 4.70	For FY and SY Botany practicals
42	Auditorium	11.80 x 11.80	For smart teaching, seminar, poster competition
43	Chemistry Lab. - I	9.70 x 6.80	
44	Zoology Lab	9.70 x 7.00	For FY and SY Zoology practical
45	Chemistry Lab.- II	11.65 x 7.00	



**S.I.C.E. Society's**  
**Degree College of Arts, Science & Commerce, Ambernath (W)**  
**Jambhul Phata, Chikhloli, Ambarnath (W)-421505**  
(Affiliated to University Of Mumbai)



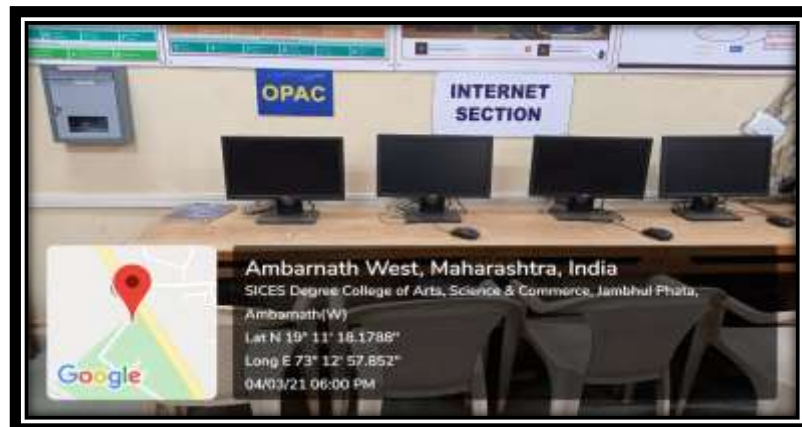
Library Entrance



**S.I.C.E. Society's**  
**Degree College of Arts, Science & Commerce, Ambarnath (W)**  
**Jambhul Phata, Chikhloli, Ambarnath (W)-421505**  
(Affiliated to University Of Mumbai)



Circulation Desk



OPAC, Internet & Suggestion Box



**S.I.C.E. Society's**  
**Degree College of Arts, Science & Commerce, Ambarnath (W)**  
**Jambhul Phata, Chikhloli, Ambarnath (W)-421505**  
(Affiliated to University Of Mumbai)

---



Stack Section



Librarian Desk





**S.I.C.E. Society's**  
**Degree College of Arts, Science & Commerce, Ambarnath (W)**  
**Jambhul Phata, Chikhloli, Ambarnath (W)-421505**  
(Affiliated to University Of Mumbai)



Periodical Section



Reprography Section



**S.I.C.E. Society's**  
**Degree College of Arts, Science & Commerce, Ambarnath (W)**  
**Jambhul Phata, Chikhloli, Ambarnath (W)-421505**  
(Affiliated to University Of Mumbai)

---

Reading Room



Computer Access Facility for Students in Library



**S.I.C.E. Society's**  
**Degree College of Arts, Science & Commerce, Ambarnath (W)**  
**Jambhul Phata, Chikhloli, Ambarnath (W)-421505**  
(Affiliated to University Of Mumbai)



Examination Section



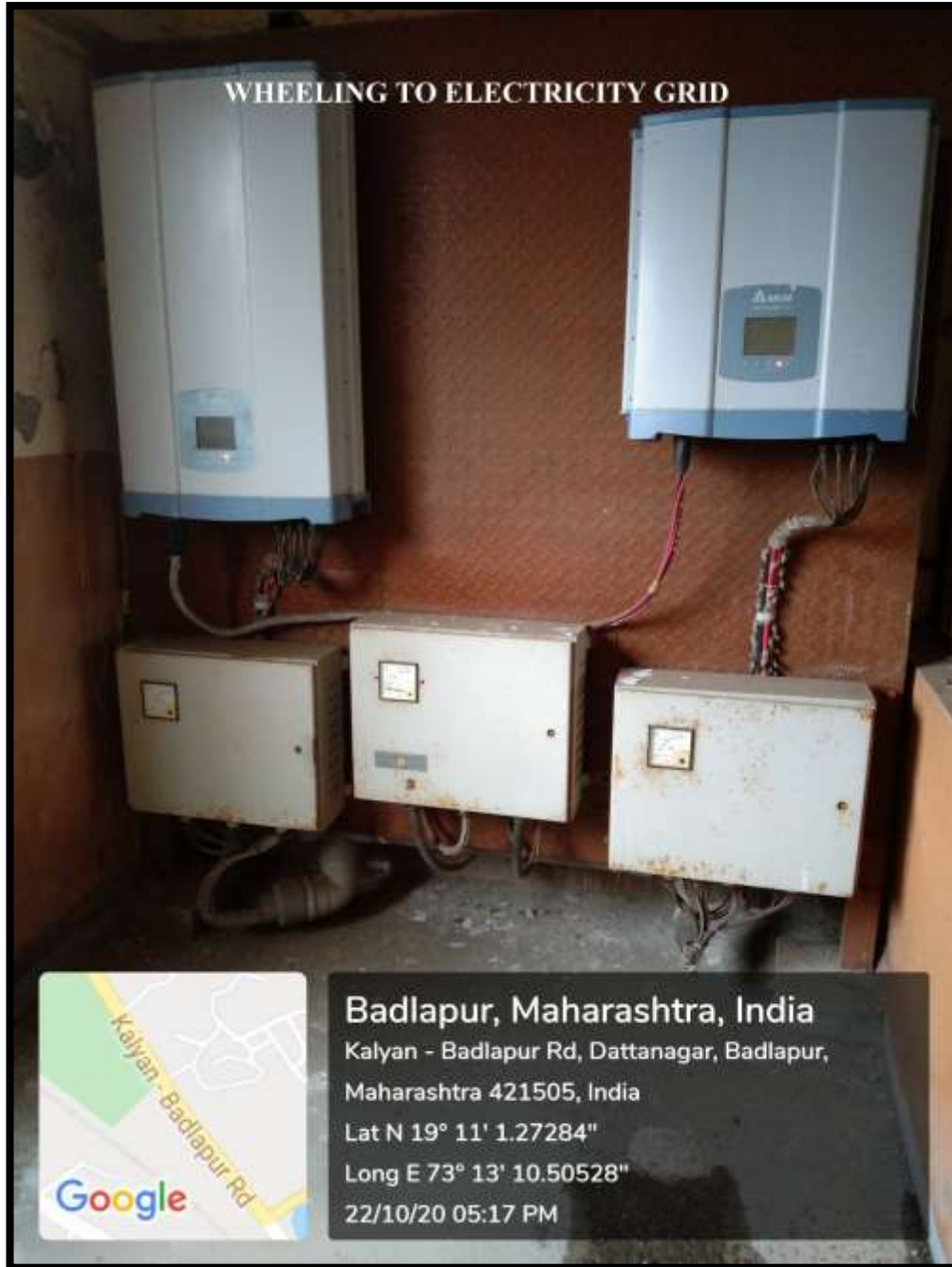
**S.I.C.E. Society's**  
**Degree College of Arts, Science & Commerce, Ambernath (W)**  
**Jambhul Phata, Chikhloli, Ambarnath (W)-421505**  
(Affiliated to University Of Mumbai)



Solar Panel



**S.I.C.E. Society's**  
**Degree College of Arts, Science & Commerce, Ambarnath (W)**  
**Jambhul Phata, Chikhloli, Ambarnath (W)-421505**  
(Affiliated to University Of Mumbai)



Solar Grid